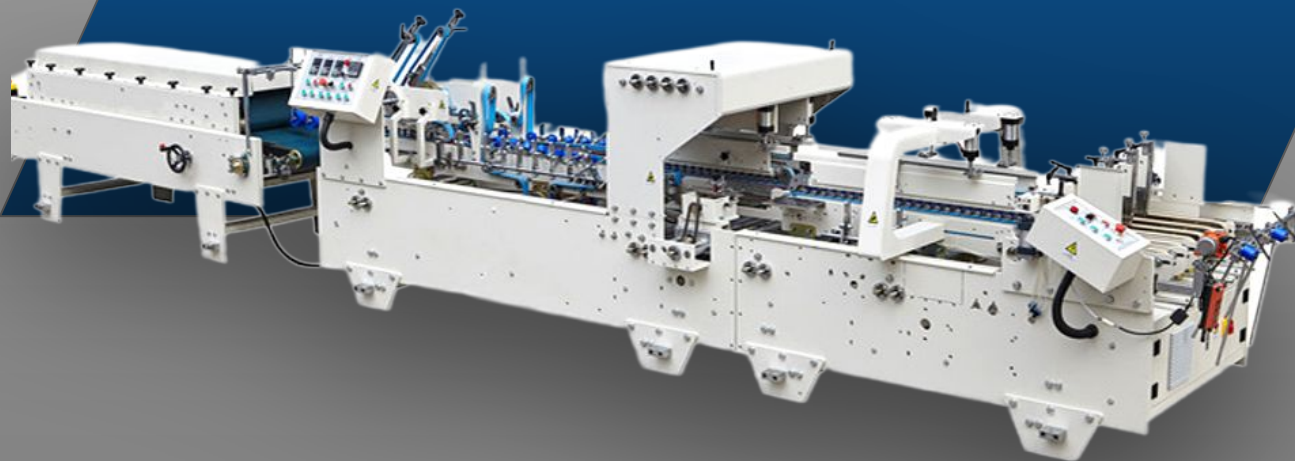


  
**Codar**  
Printing Equipment

# AUTOMATIC PRE-FOLD FOLDER GLUER MACHINE

## YZHH-600



The Automatic pre-fold folder gluer machine, with its advanced pre-folding, rapidly assembles boxes, enhancing efficiency and streamlining production. It is widely used in food, medicine, cosmetics, stationery and other ordinary cartons.

Pre-fold section is applied to auto packaging, fold 1 and fold 3 of all cartons can reach 180° and 135° ,perfectly combing the requirements of auto packaging together.



Featuring a double-plate structure and a set of pre-folding knives. The 180° pre-folding angle enables more satisfactory rapid forming. The folding stroke is extended to avoid uneven cartons during rapid folding, achieving a perfect state.

| Model            | YZHH-600   |
|------------------|--|
| Paper Material   | Cardboard 200-800g E-fluteE /F-fluteF                            |
| Max. Liner Speed | 250 meter/minute   |
| Feeding Way      | Automatically and continuously feeding                           |
| Way of Folding   | Fold 1 and fold 3 are 180°and 135°<br>Fold 2 and fold 4 are 180° |
| Glue Material    | Water-base cold glue   |
| Electric Power   | 5.5KW 380V 50HZ 3-Phase  |
| Weight           | 2500KG   |
| Dimension        | 10500 x 1100 x 1400mm  |



### Feeding

Adjustable feeding belts to ensure easy adjustment, stable and smoothly feeding. Continuously Variable Speeder to ensure feeding internal and stable transmission. One-touch Pneumatic knife, easy for the adjustment of feeding belts.

### Pre-fold

Double-board structure with a set of pre-folding knife. Pre-fold angle is  $135^\circ$ , especially suitable for small but high cartons, more satisfactory while rapid prototyping.



### Folding

Lengthened folding to avoid the unevenness while the rapid forming of cartons and make it come to perfection.





### Full Pressing

With counting device to count the finished boxes to match with boxes regulating, easy to count and pack.

### Transmission

Equipped with feeding paper inspection device. Equipped with impacting device to press the paper after counting and make it easy to pack paper.



### The Grinding Part

More effective treatment of paper surface UV, the carton adhesive more stronger

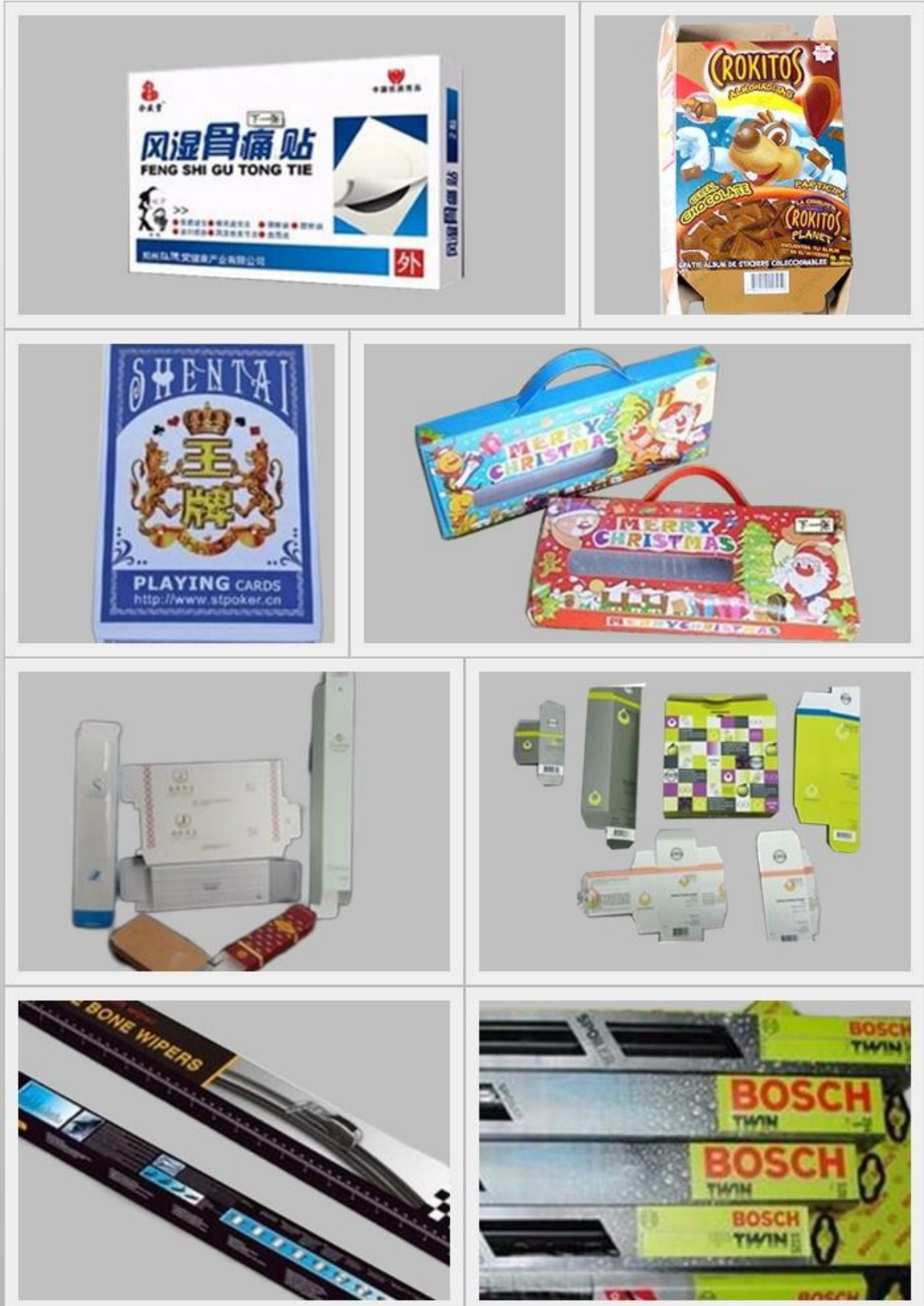


### Optional Spraying System (Water-based Cold Glue)

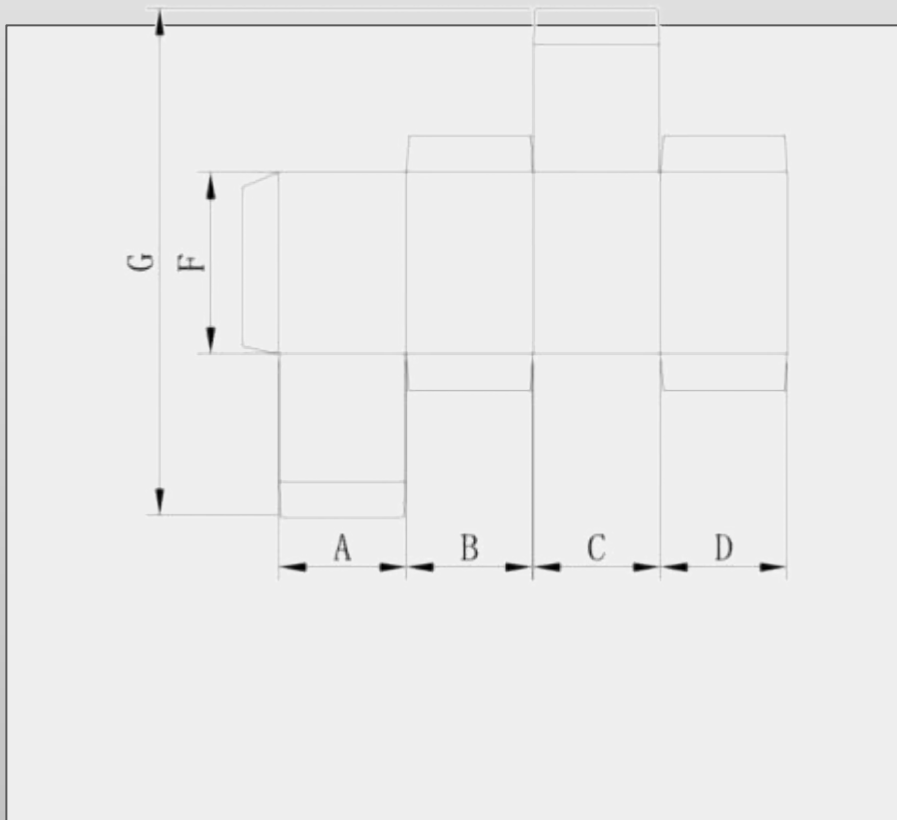
Irregular box types require additional spraying system. Equipped with three guns, convenient in the production various special box, enhances gluing quickly and accurately sizing.

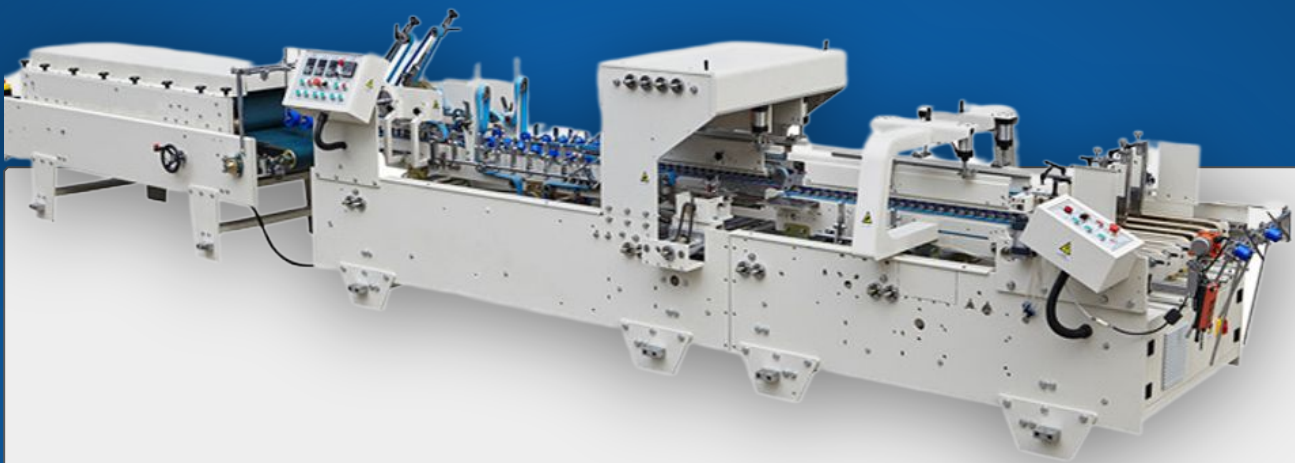
(Options: customized on user order)

| Paper Type | Cardboard | E/F<br>Corrugated |
|------------|-----------|-------------------|
| A+B+C+D    | 100-580mm |                   |
| C+D Min    | 50mm      |                   |
| D Min      | 8mm       |                   |
| F Min      | 50mm      |                   |
| G          | 70-700mm  |                   |



| Paper Type | Cardboard | E/F<br>Corrugated |
|------------|-----------|-------------------|
| A+B+C+D    | 100-580mm |                   |
| C+D Min    | 50mm      |                   |
| D Min      | 8mm       |                   |
| F Min      | 50mm      |                   |
| G          | 70-700mm  |                   |





  
**Codar**  
Printing Equipment

**+60 12-236 3313 (Mr. Hong)**

**CODAR PRINTING EQUIPMENT SDN. BHD.  
(484325-U)**

No 1, Jalan BP 5/5, Bandar Bukit Puchong, 47100,  
Puchong, Selangor Darul Ehsan, Malaysia

[info@codar.com.my](mailto:info@codar.com.my)  
[www.codar.com.my](http://www.codar.com.my)